

Project No. 251084.00

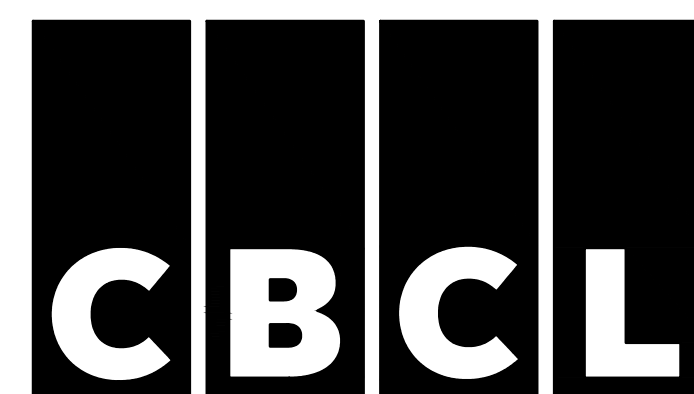
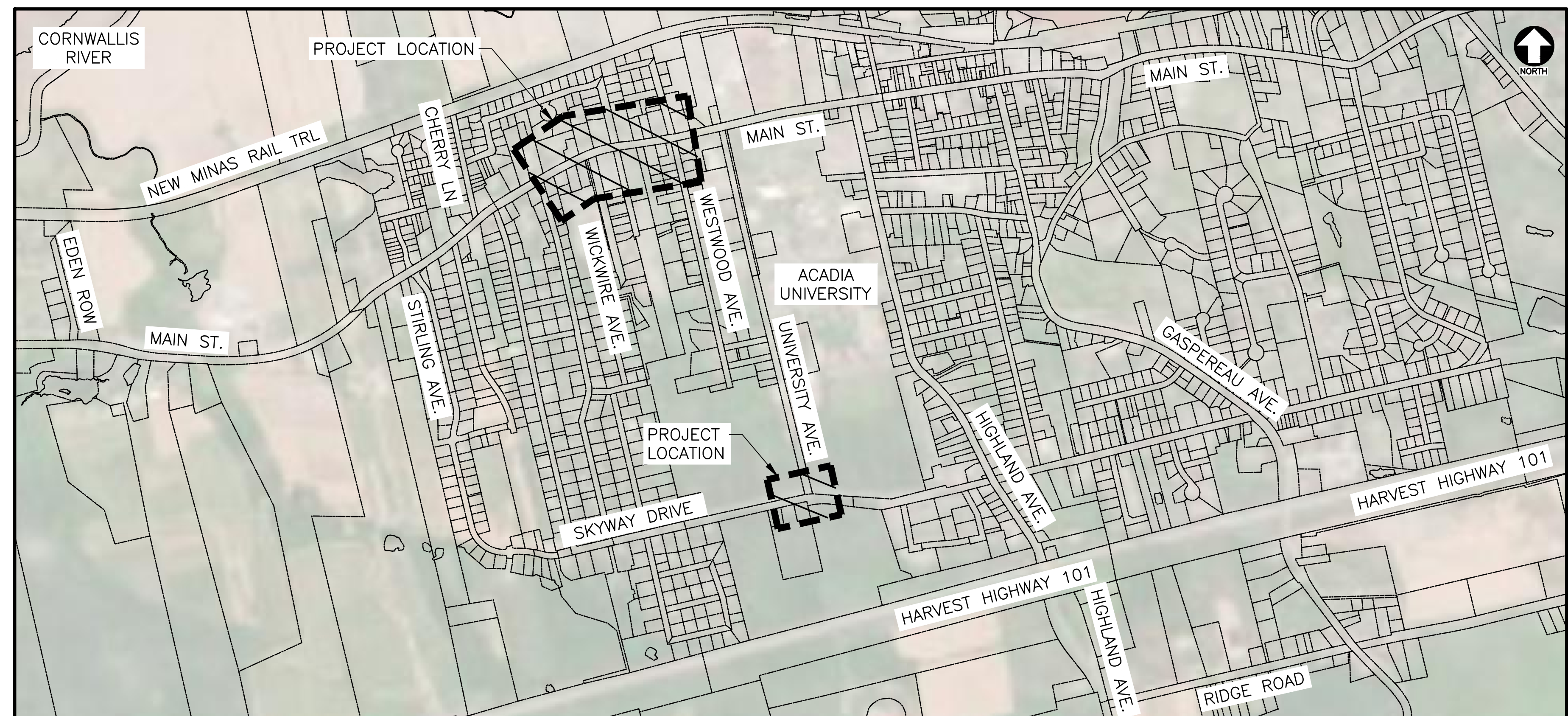
TOWN OF WOLFVILLE



DRAWING LIST

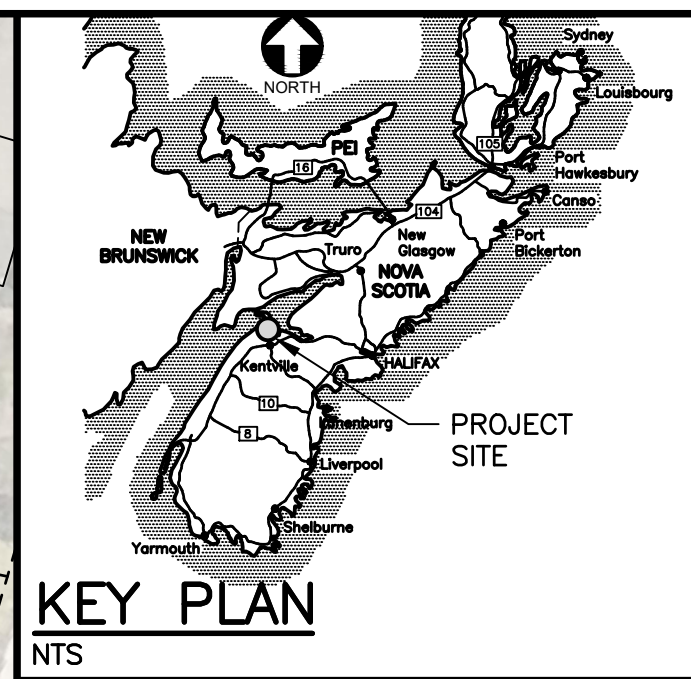
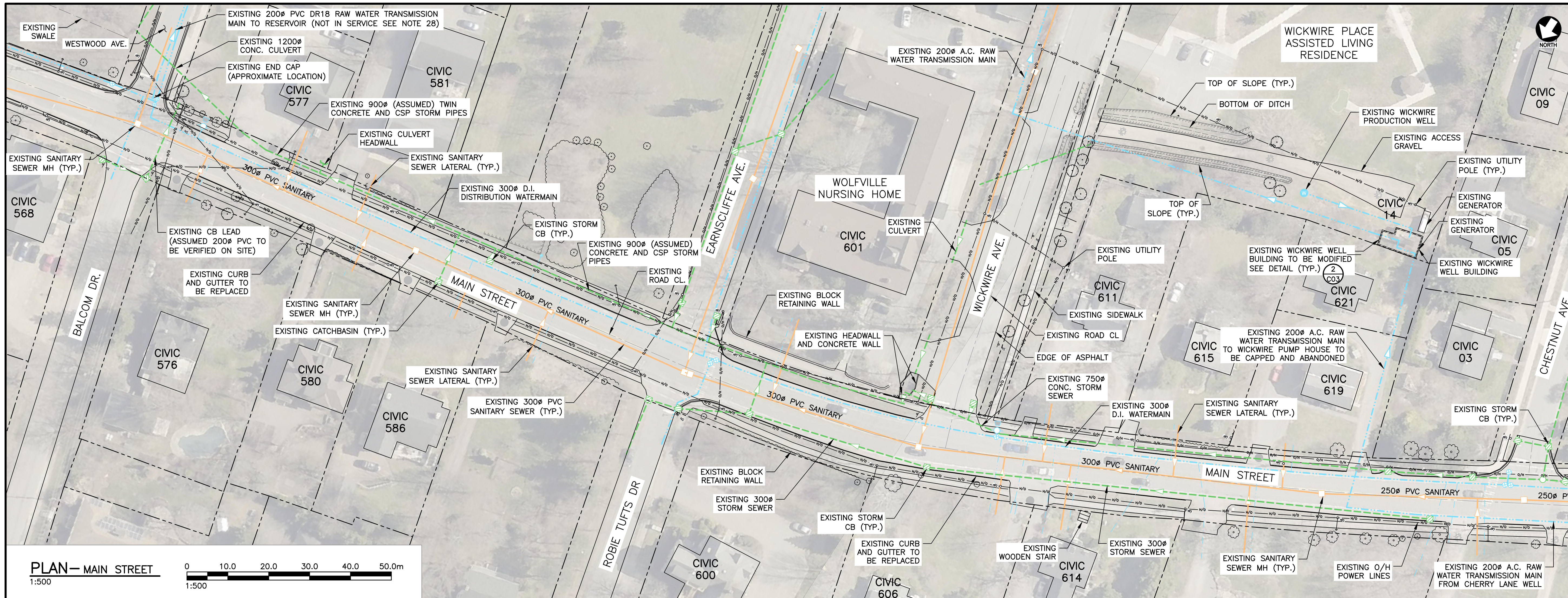
Sheet Number	Sheet Title
	COVER SHEET
C01	MAIN STREET EXISTING SITE PLAN & REMOVALS
C02	MAIN STREET PROPOSED PLAN & PROFILE
C03	WICKWIRE DR. PROFILE, CONNECTION AT SKYWAY DR., DETAILS, AND WELL HOUSE PIPE MODIFICATIONS
C04	DETAIL SHEET (1 of 2)
C05	DETAIL SHEET (2 of 2)

WOLFVILLE RAW WATER TRANSMISSION MAIN EXTENSION CONTRACT NO. WOL001-2026



ISSUED FOR
TENDER

APRIL 02, 2026

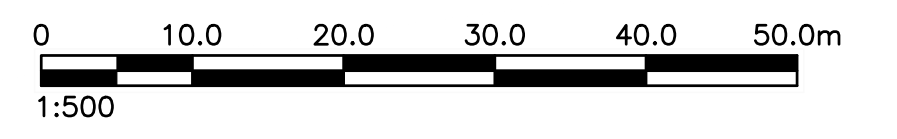


LEGEND

	PROPERTY LINE (EX.)
	ROAD CENTER (EX.)
	TRANSMISSION WATERMAIN (EX.)
	WATERMAIN (EX.)
	WATER LATERAL (EX.)
	WATERMAIN FITTINGS (EX.)
	STORM CATCHBASIN (EX.)
	STORM MANHOLE (EX.)
	SANITARY SEWER/LATERAL (EX.)
	SANITARY MH (EX.)
	STORM SEWER (EX.)
	GATE VALVE (EX.)
	FIRE HYDRANT (EX.)
	VEGETATION/SHRUBS (EX.)
	O/H POWER (EX.)
	UTILITY POLE (EX.)
	STEEL POST (EX.)
	TOP OF SLOPE (EX.)
	STORM DITCH (EX.)
	TREE (HARDWOOD) (EX.)
	ASPHALT DRIVEWAY (EX.)
	GRAVEL DRIVEWAY (EX.)

NOTE
1. SEE GENERAL NOTES.

PLAN— MAIN STREET
1:500



GENERAL NOTES

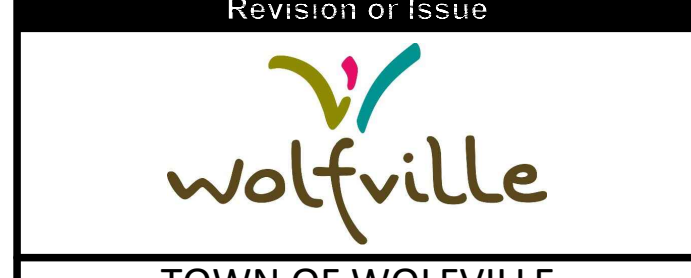
- THE LOCATION OF ALL EXIST. UNDERGROUND PIPE & UTILITIES SHOWN ARE APPROXIMATE ONLY AND TO BE CONFIRMED IN THE FIELD. CONFIRM LOCATION OF ALL UTILITIES PRIOR TO CONSTRUCTION WITH A FIELD LOCATE. MAINTAIN AND PROTECT ALL UTILITIES DURING CONSTRUCTION. PAYMENT FOR ALL LOCATES SHALL BE INCLUDED IN THIS CONTRACT.
- ALL ELEVATIONS ARE IN METRES. TOPOGRAPHIC DATA IS IN NAD83 (CSRS) (2010) MTM ZONE 5 USING THE CGVD13 VERTICAL DATUM.
- ALL CONSTRUCTION TO BE COMPLETED IN ACCORDANCE WITH THE NOVA SCOTIA STANDARD SPECIFICATIONS FOR MUNICIPAL SERVICES (LATEST EDITION).
- ENCASE WATERMAIN IN DR18 PVC PIPE AT LOCATIONS WHERE VERTICAL SEPARATION BETWEEN THE CROSSING WATERMAIN AND SEWER IS LESS THAN 450mm, OR IF THE WATER PIPE CROSSES BELOW THE SEWER PIPE.
- UTILITY SERVICES TO EACH BUILDING ARE NOT SHOWN, OR IF SHOWN ARE APPROXIMATE ONLY.
- REMOVE EXISTING WATERMAIN AS REQUIRED TO INSTALL NEW WATERMAIN.
- WATERMAINS TO HAVE MECHANICAL RESTRAINTS AT ALL FITTINGS, TEES, BENDS, CAPPED ENDS, VALVES, COUPLINGS, CROSSES, REDUCERS, AND HYDRANTS. PROVIDE THRUST BLOCKS WHERE INDICATED.
- CONTRACTOR TO OBTAIN ALL NECESSARY PERMITS REQUIRED TO PERFORM WORK AND TO COMPLY WITH ALL PERMIT REQUIREMENTS AND CONDITIONS. CONTRACTOR TO COMPLY WITH ALL APPLICABLE ENVIRONMENTAL REGULATIONS.
- WHERE EXISTING CONDITIONS ARE SHOWN THEY ARE NOT NECESSARILY ACCURATE OR COMPLETE. THE CONTRACTOR SHALL CONFIRM ALL EXISTING DIMENSIONS, ELEVATIONS AND LOCATIONS AND REPORT ANY DISCREPANCIES TO THE ENGINEER. CONTRACTOR IS RESPONSIBLE FOR SETTING GRADES AND LAYOUT CONTROL.
- PROPERTY LINE INFORMATION IS APPROXIMATE ONLY AND OBTAINED FROM THE NOVA SCOTIA PROPERTY RECORDS DATABASE.
- ADJACENT STREETS MUST BE KEPT FREE OF DIRT AND MUD FROM SITE. SWEEP OF ROADS ON A REGULAR BASIS.
- TRAFFIC SIGNS ARE NOT TO BE REMOVED OR REPLACED WITHOUT AUTHORIZATION FROM TRAFFIC AUTHORITY AND THE ENGINEER.
- AT COMPLETION OF WORK REINSTATE ALL DISTURBED SURFACES TO THE SATISFACTION OF THE ENGINEER.
- BACKFILL MATERIAL OUTSIDE THE LIMITS OF GRANULAR BACKFILL TO CONSIST OF APPROVED BACKFILL MATERIAL FROM THE EXCAVATION. CONTRACTOR TO MANAGE MATERIAL ON SITE FOR THE REUSE.
- ALL DRAWING UNITS ARE METRIC.
- ALL GRADES SHOWN ARE APPROXIMATE. FINISHED GRADE TO BE APPROVED IN FIELD.
- PROVIDE ALL TRAFFIC CONTROL REQUIRED DURING THIS PROJECT. TRAFFIC CONTROL IS REQUIRED CONTINUOUSLY WHILE WORK IS BEING CARRIED OUT. PROVIDE TRAFFIC CONTROL PLAN IN ACCORDANCE WITH TEMPORARY WORKPLACE TRAFFIC CONTROL MANUAL ISSUED BY NOVA SCOTIA DEPT. OF TRANSPORTATION AND PUBLIC WORKS, AND IN ACCORDANCE WITH MUTCD REQUIREMENTS. PLEASE REFER TO THE SPECIFICATIONS FOR INFORMATION ON MAINTAINING TWO (2) LANES OF TRAFFIC AT ALL TIMES.

SEDIMENT CONTROL NOTES:

- THE CONTRACTOR IS RESPONSIBLE FOR ALL ENVIRONMENTAL EROSION AND SILTATION CONTROL AS PER THE LATEST EDITION OF THE NOVA SCOTIA ENVIRONMENT EROSION AND SILTATION GUIDELINES. EROSION AND SILTATION DEVICES TO BE IN PLACE BEFORE COMMENCING WORK.
- EXPOSED SURFACES MUST BE STABILIZED ON A DAILY BASIS. PARTICULAR ATTENTION SHOULD BE PAID TO RAINFALL FORECASTS AND ASSURING THE SITE HAS ADEQUATE PROTECTION.
- INSTALL SILT FENCING AS INDICATED ON DRAWING, AND AT LOCATIONS NECESSARY TO BLOCK SEDIMENT FROM LEAVING SITE. SILT FENCING SHOULD BE MAINTAINED ON A REGULAR BASIS.
- MAINTAIN A STOCKPILE OF EROSION AND ENVIRONMENTAL PROTECTION MATERIAL ON SITE AT ALL TIMES FOR DAY TO DAY USE.
- STOCKPILES SHALL BE COVERED WITH PLASTIC SHEETS IN ADVANCE OF RAIN EVENTS AS REQUIRED.
- CONTRACTOR TO ENSURE THAT MATERIAL IS NOT TRACKED ONTO ADJACENT STREETS BY VEHICLES LEAVING THE SITE. DAILY STREET SWEEPING REQUIRED WHEN HAULING.
- INSTALL FILTER BAGS ON CATCH BASINS TO PREVENT SEDIMENT FROM ENTERING STORM SYSTEM.
- REMOVE ALL EROSION AND SEDIMENT CONTROL DEVICES ONCE REINSTATEMENT WORK HAS BEEN COMPLETED AND VEGETATED AREAS HAVE REESTABLISHED STRONG GROWTH.

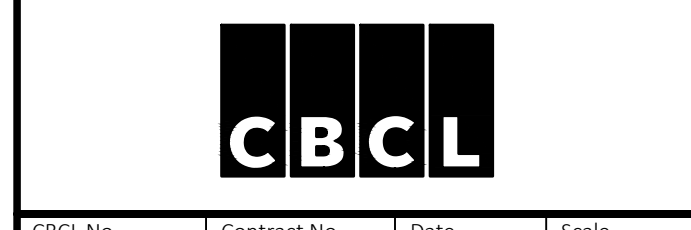
- ALL PRODUCTS AND MATERIALS ON THE WATER SYSTEM ARE REQUIRED TO BE NSF61 COMPLIANT.
- NOTIFY NSPI BEFORE EXCAVATING NEAR UTILITY POLES. PROVIDE TEMPORARY SUPPORT FOR UTILITY POLES AS REQUIRED. COORDINATE REINSTATEMENT OF ANY DISTURBED GU WIRES WITH NSPI.
- VERTICAL ALIGNMENT CHANGES ARE TO BE ACHIEVED VIA JOINT DEFLECTION. MAXIMUM DEFLECTION PER JOINT: 3 DEGREES.
- CONTRACTOR TO EXPOSE EXISTING MAINS IN THE PRESENCE OF TOWN.
- THE EXISTING 200MM DIAMETER ASBESTOS CEMENT RAW WATER TRANSMISSION MAIN IS CURRENTLY IN USE AND IS THE ONLY RAW WATER CONNECTION FROM THE TOWN WELLS TO THE TREATMENT PLANT AND RESERVOIR. THIS PIPE IS TO BE REMOVED AND REPLACED WITH 200MM DIAMETER PVC DR18. SPECIAL CARE MUST BE TAKEN WHILE PERFORMING THIS WORK TO ENSURE THAT WATER SERVICE TO THE TREATMENT PLANT IS NOT DISRUPTED. PLEASE REFER TO SECTION 33 11 00 OF THE SUPPLEMENTARY SPECIFICATION FOR ADDITIONAL INFORMATION REGARDING CONNECTION REQUIREMENTS. NOTIFY THE ENGINEER IF ANYTHING IS UNCLEAR.
- PROPOSED WATERMAIN LOCATION, DEPTHS, AND BENDS ARE APPROXIMATE AND SHALL BE VERIFIED IN THE FIELD BASED ON SITE CONDITIONS.
- SPECIAL CARE SHALL BE TAKEN DURING THE CONNECTION TO THE WICKWIRE WELL SYSTEM TO PROPERLY ISOLATE THE SYSTEM PRIOR TO COMMENCING WORK AND OPERATING VALVES. THE WELL PUMP SHALL NOT BE OPERATED WHILE THE EXISTING WATERMAIN IS OPEN OR DURING CONNECTION ACTIVITIES TO AVOID BLOWOFF OR UNCONTROLLED DISCHARGE. ANY WATER DRAINED FROM THE SYSTEM SHALL BE CONTROLLED AND MANAGED TO PREVENT FLOODING, EROSION, OR ADVERSE IMPACTS TO DOWNSTREAM PROPERTIES, AND SHALL BE DISPOSED OF IN ACCORDANCE WITH MUNICIPAL REQUIREMENTS. VALVES SHALL NOT BE OPERATED WITHOUT PERMISSION FROM MUNICIPAL STAFF.
- FOR THE CONNECTION TO THE EXISTING WATERMAIN ON WICKWIRE AVENUE THE CONTRACTOR MUST EXPOSE THE WATERMAIN AND CONFIRM EXISTING PIPE SIZE(S) AND DEPTH. THIS INFORMATION SHALL BE REPORTED TO THE ENGINEER A MINIMUM OF TWO (2) WEEKS PRIOR TO COMMENCING WATERMAIN CONSTRUCTION ON WICKWIRE AVENUE.
- ALL NEW WATERMAIN TO HAVE TRACER WIRE INSTALLED, TESTED AND COMMISSIONED AS PER THE MUNICIPAL SERVICES SPECIFICATIONS.
- THE EXISTING 200mm PVC WATERMAIN TO BE CONNECTED AT WESTWOOD AVENUE AND SKYWAY DRIVE IS NOT CURRENTLY IN SERVICE. THIS PIPE WAS INSTALLED AS PART OF PRIOR PHASES OF THE WOLFVILLE RAW WATER TRANSMISSION MAIN UPGRADES. THE WORK UNDER THIS CONTRACT WILL ULTIMATELY CONNECT THESE PIPES TO THE EXISTING WELL AND TRANSMISSION SYSTEM AND CONVEY WATER TO THE WATER TREATMENT PLANT.

No.	Description	Date	By
0	ISSUED FOR TENDER	APR 02/26	RWM

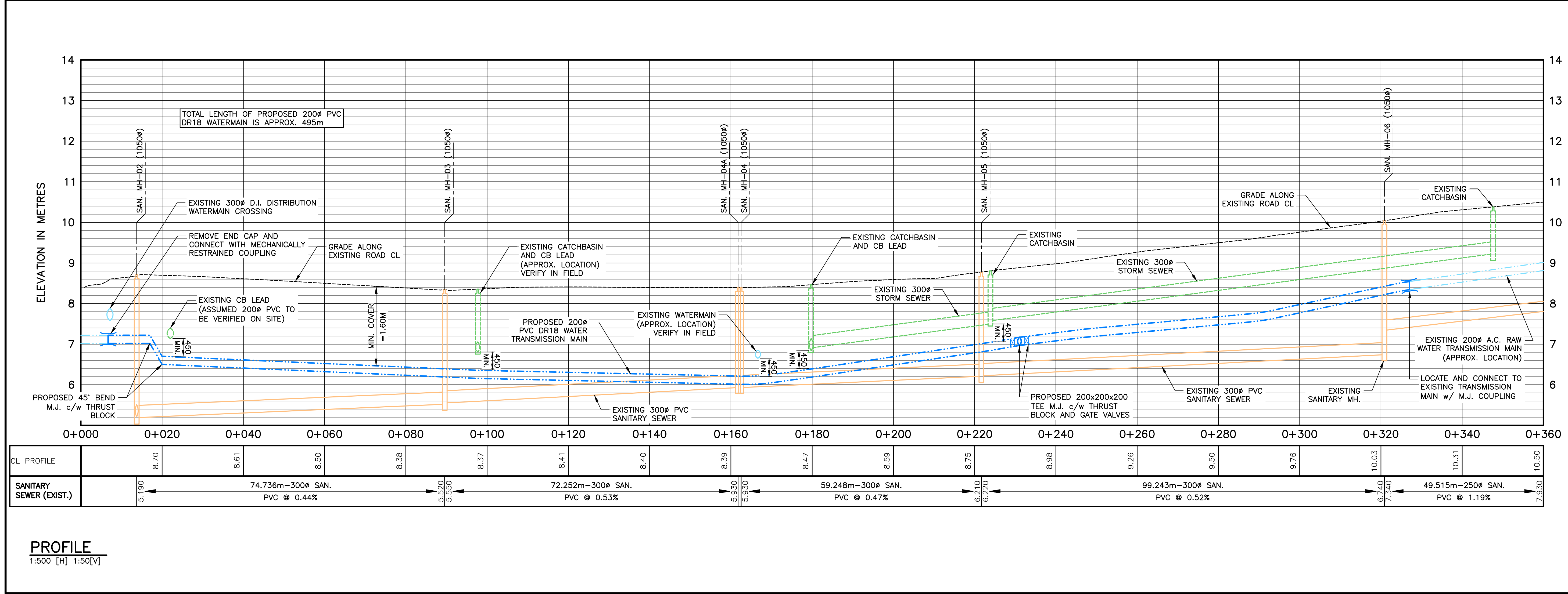
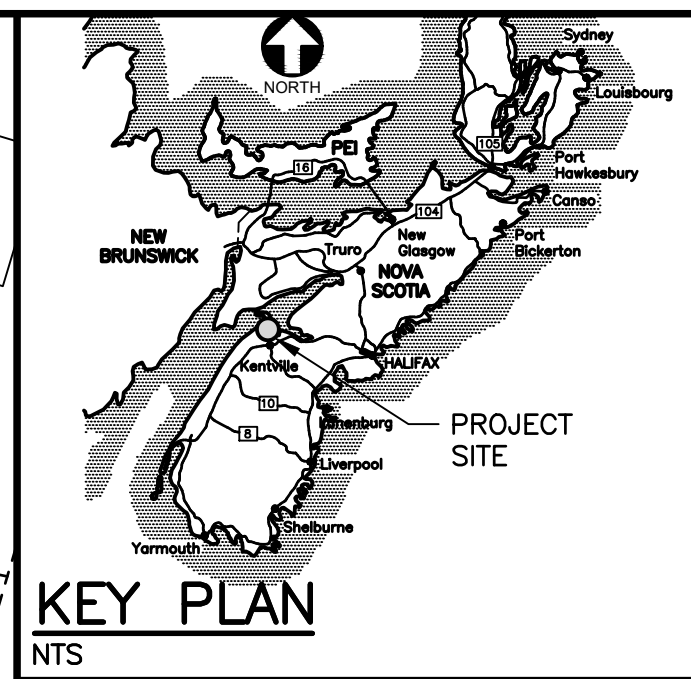
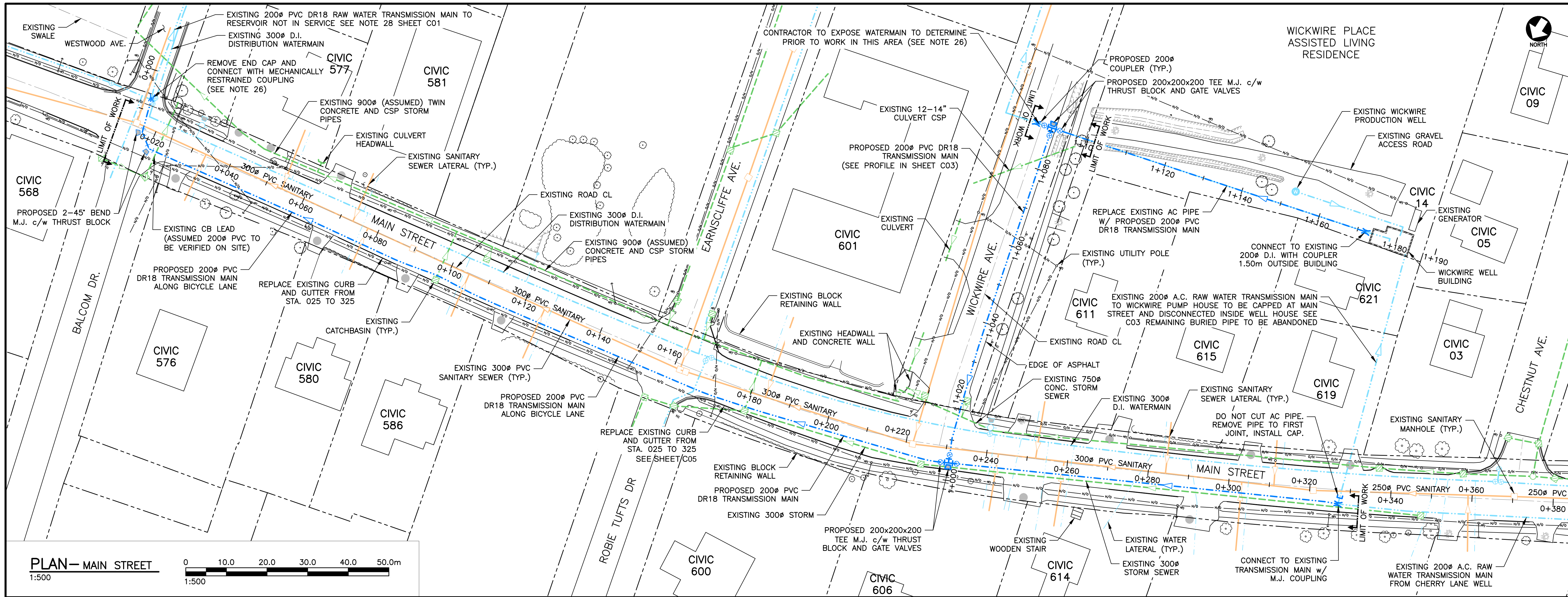


WOLFVILLE RAW WATER TRANSMISSION MAIN EXTENSION

CIVIL
MAIN STREET EXISTING SITE PLAN & REMOVALS



Contract No	Date	Scale
251084.00	JAN 2025	AS NOTED
Designed	Drawn	
RWM	CB	
Checked	Approved	
JAB	RWM	
Sheet No	Drawing No	
1 of 5	C01	



LEGEND

- PROPERTY LINE (EX.)
- ROAD CENTER (EX.)
- TRANSMISSION WATERMAIN (EX.)
- TRANSMISSION WATERMAIN (PR.)
- WATERMAIN (EX.)
- WATER LATERAL (EX.)
- WATERMAIN FITTINGS (EX.)
- WATERMAIN BENDS (EX.)
- WATERMAIN BENDS (PR.)
- STORM CATCHBASIN (EX.)
- STORM MANHOLE (EX.)
- SANITARY SEWER/LATERAL (EX.)
- SANITARY MH (EX.)
- STORM SEWER (EX.)
- GATE VALVE (EX.)
- GATE VALVE (PR.)
- FIRE HYDRANT (EX.)
- VEGETATION/SHRUBS (EX.)
- O/H POWER (EX.)
- UTILITY POLE (EX.)
- STEEL POST (EX.)
- TOP OF SLOPE (EX.)
- STORM DITCH (EX.)
- TREE (HARDWOOD) (EX.)
- ASPHALT DRIVEWAY (EX.)
- GRAVEL DRIVEWAY (EX.)

NOTE
1. SEE GENERAL NOTES ON SHEET C01.

REVISIONS

No.	Description	Date	By
0	ISSUED FOR TENDER	APR 02/26	RWM

Revision or Issue

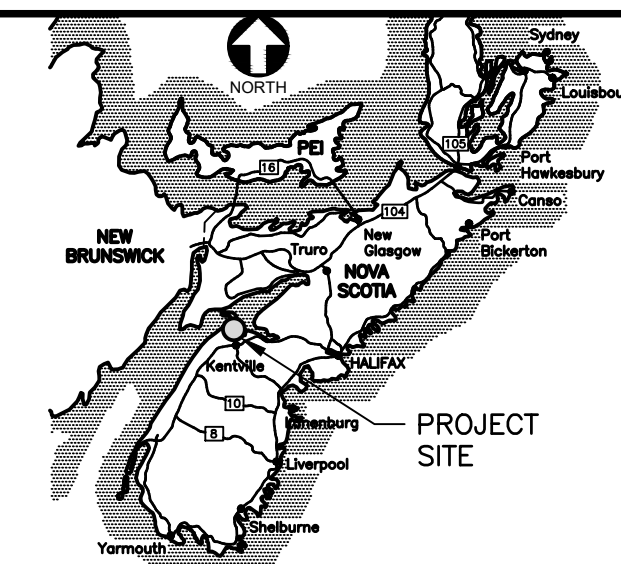
wolfville
TOWN OF WOLFVILLE
WOLFVILLE RAW WATER TRANSMISSION MAIN EXTENSION

CIVIL
MAIN STREET PROPOSED PLAN & PROFILE

CBCL

Contract No. 251084.00	Date: JAN 2025	Scale: AS NOTED
Designed: RWM	Drawn: CB	
Checked: JAB	Approved: RWM	
Sheet No. 2 of 5		
Drawing No. C02		

PROFESSIONAL ENGINEER
R. W. MacIntosh
20210854
PROVINCE OF NOVA SCOTIA

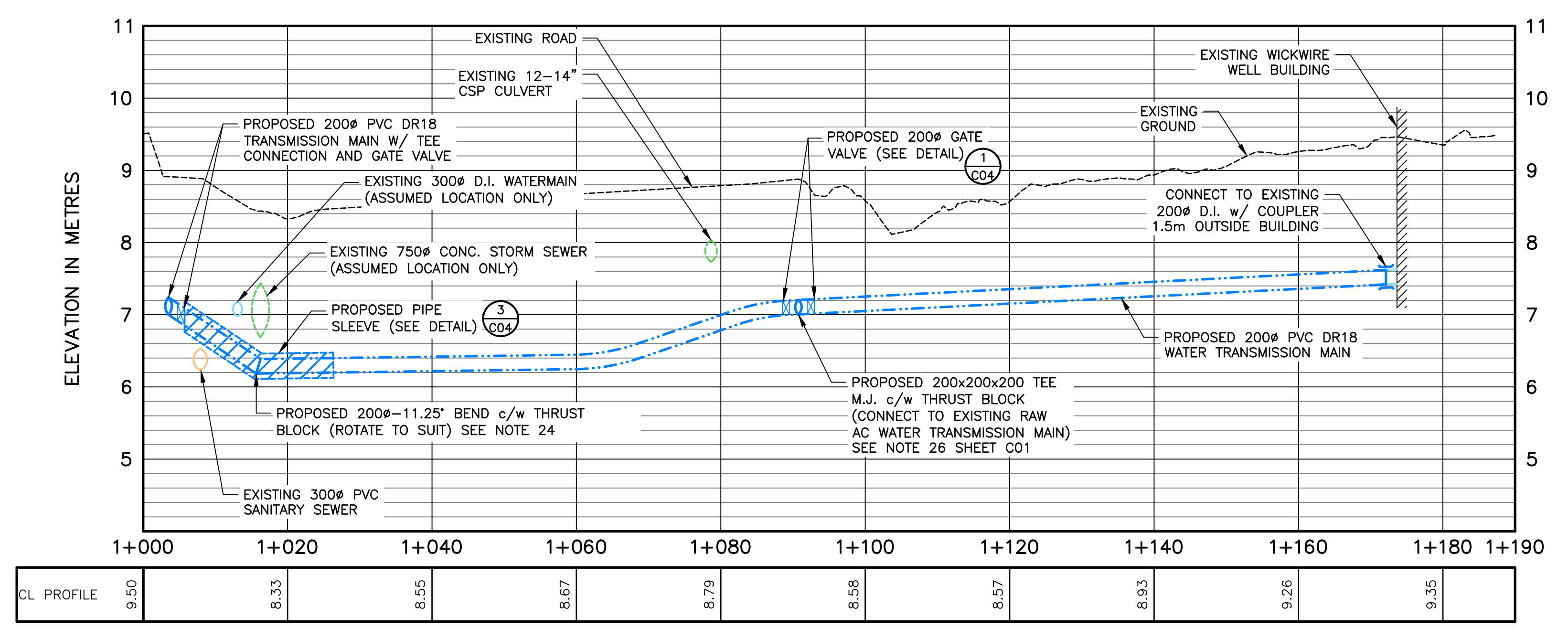


KEY PLAN
NTS

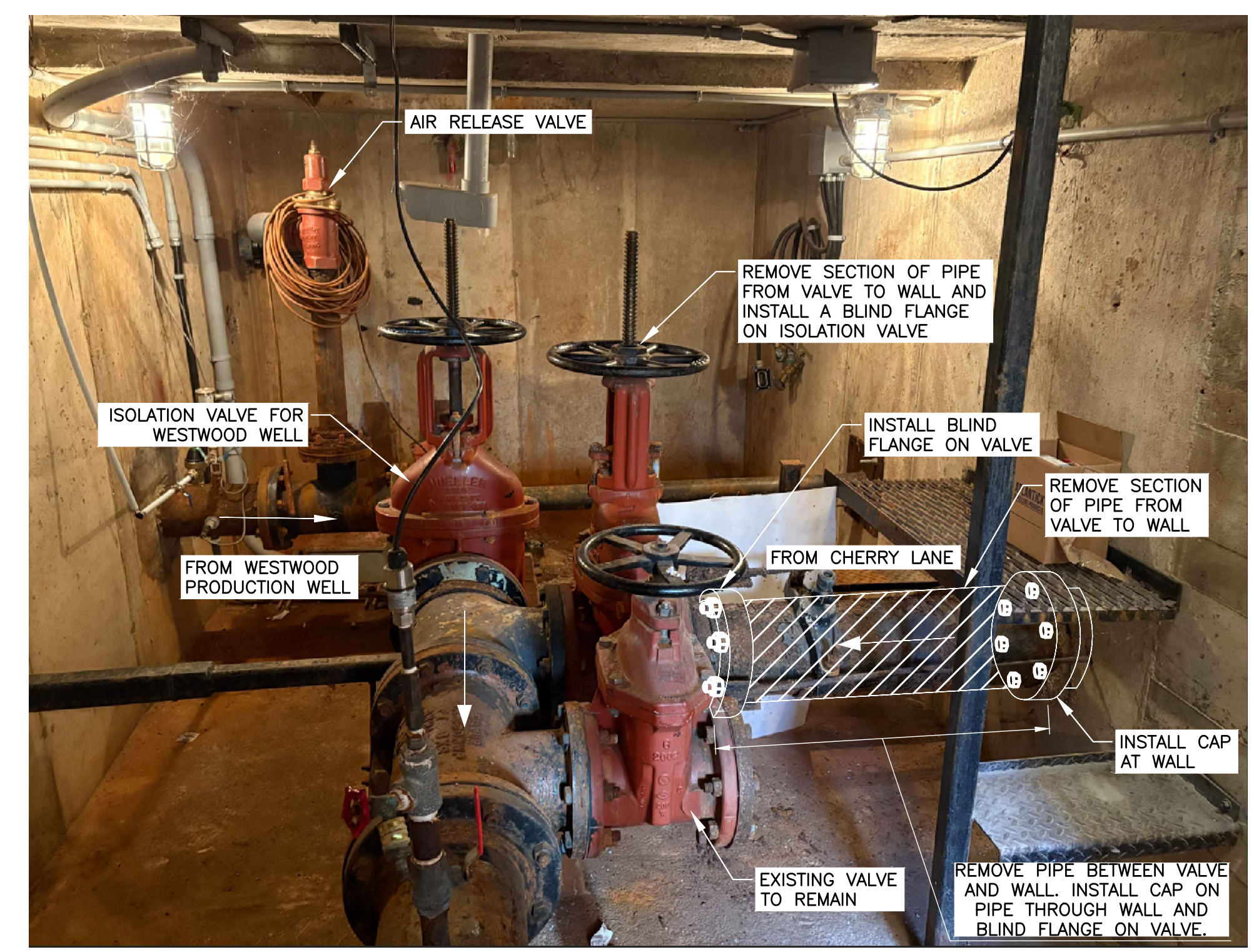
LEGEND

- PROPERTY LINE (EX.)
- ROAD CENTER (EX.)
- TRANSMISSION WATERMAIN (EX.)
- TRANSMISSION WATERMAIN (PR.)
- WATERMAIN (EX.)
- WATER LATERAL (EX.)
- WATERMAIN FITTINGS (EX.)
- WATERMAIN FITTINGS (PR.)
- WATERMAIN BENDS (EX.)
- WATERMAIN BENDS (PR.)
- STORM CATCHBASIN (EX.)
- STORM MANHOLE (EX.)
- SANITARY SEWER/LATERAL (EX.)
- SANITARY MH (EX.)
- STORM SEWER (EX.)
- GATE VALVE (EX.)
- GATE VALVE (PR.)
- FIRE HYDRANT (EX.)
- VEGETATION/SHRUBS (EX.)
- O/H POWER (EX.)
- UTILITY POLE (EX.)
- STEEL POST (EX.)
- TOP OF SLOPE (EX.)
- STORM DITCH (EX.)
- TREE (HARDWOOD) (EX.)
- ASPHALT DRIVEWAY (EX.)
- GRAVEL DRIVEWAY (EX.)

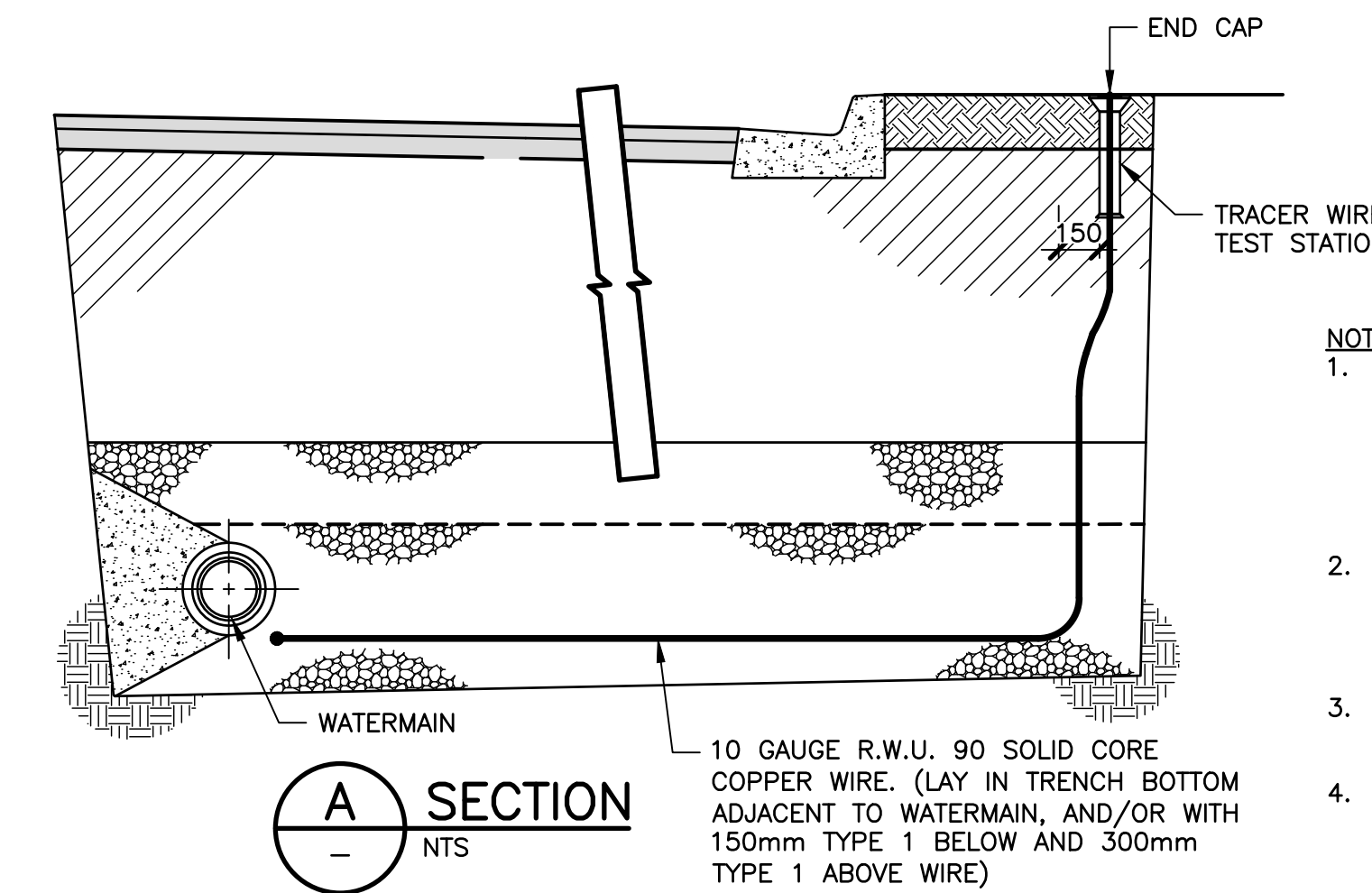
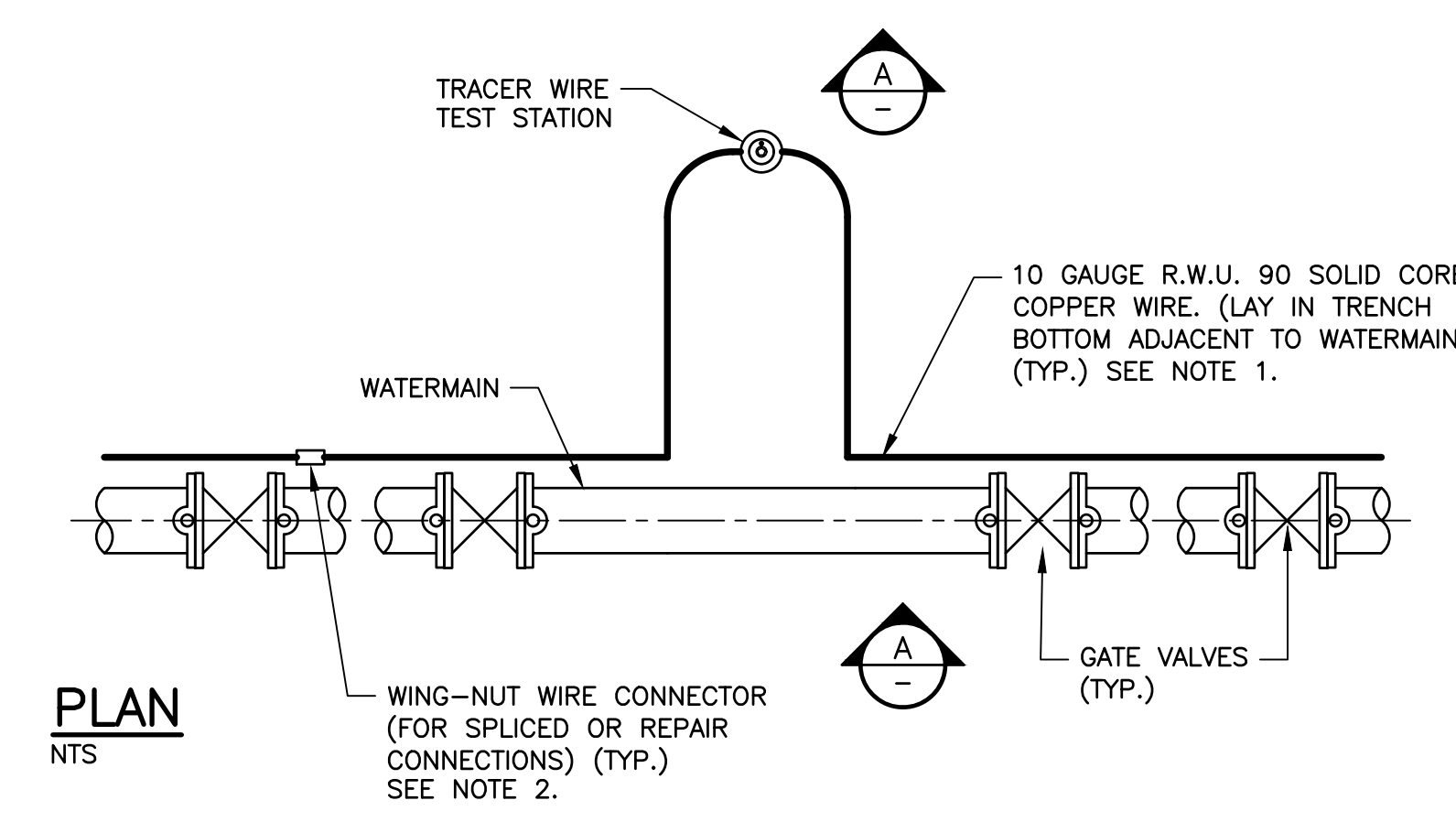
NOTE
1. SEE GENERAL NOTES ON SHEET C01.



1 PROFILE - WICKWIRE AVE.
1:500 [H] 1:50[V]

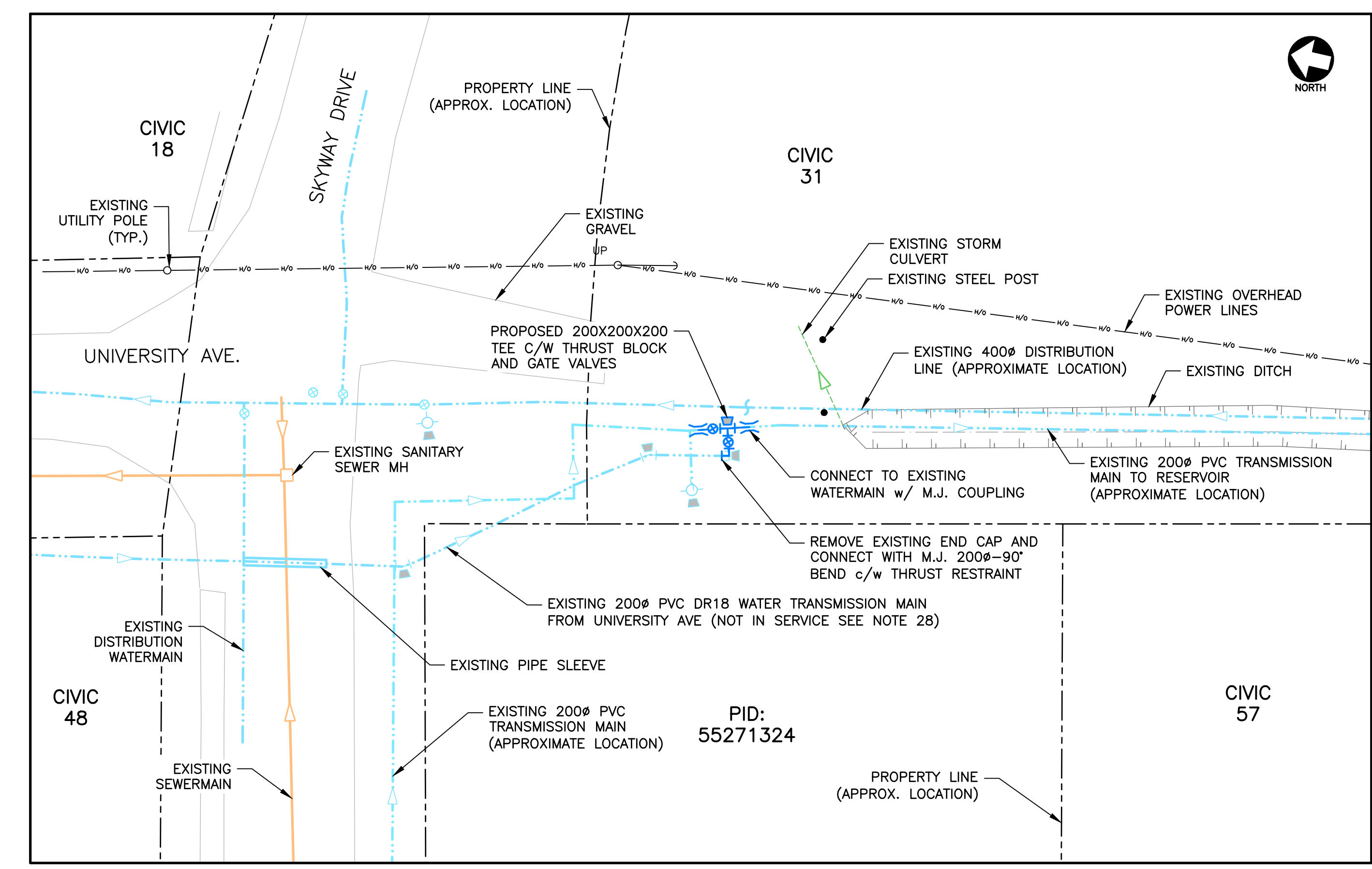


2 DETAIL - EXISTING WICKWIRE WELL BUILDING PIPE MODIFICATIONS
NTS

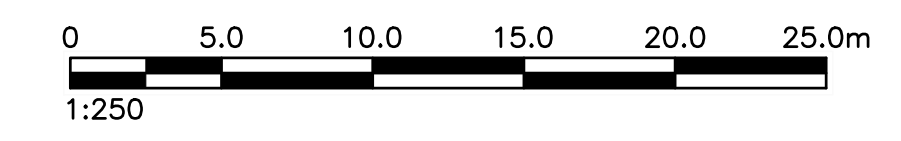


- NOTES:**
1. TRACER WIRE TO BE SET AT BEGINNING OF ALIGNMENT, MIDDLE OF ALIGNMENT AND END OF ALIGNMENT, IN LOCATIONS DETERMINED DURING CONSTRUCTION AND APPROVED BY ENGINEER.
 2. SPLICE ONLY WHERE NECESSARY TO JOIN TWO SPOOLS OF WIRE OR WHERE MULTIPLE RUNS MEET AT AN INTERSECTION.
 3. TRACE WIRE SYSTEM TO BE TESTED TO ENSURE CONTINUITY.
 4. SEE SPECIFICATION FOR PRODUCT INFORMATION.

3 DETAIL - STANDARD TRACE WIRE FOR PVC WATERMAIN
1:25



4 PLAN - SKYWAY DRIVE TEE CONNECTION
1:250



No.	Description	Date	By
0	ISSUED FOR TENDER	APR 02/26	RWM

Revision or Issue



TOWN OF WOLFVILLE

WOLFVILLE RAW WATER TRANSMISSION MAIN EXTENSION

CIVIL

WICKWIRE DR. PROFILE, CONNECTION AT SKYWAY DR., DETAILS, AND WELL HOUSE PIPE MODIFICATIONS



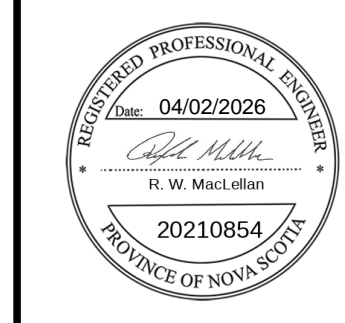
CBCL No	Contract No	Date	Scale
251084.00		JAN 2025	AS NOTED

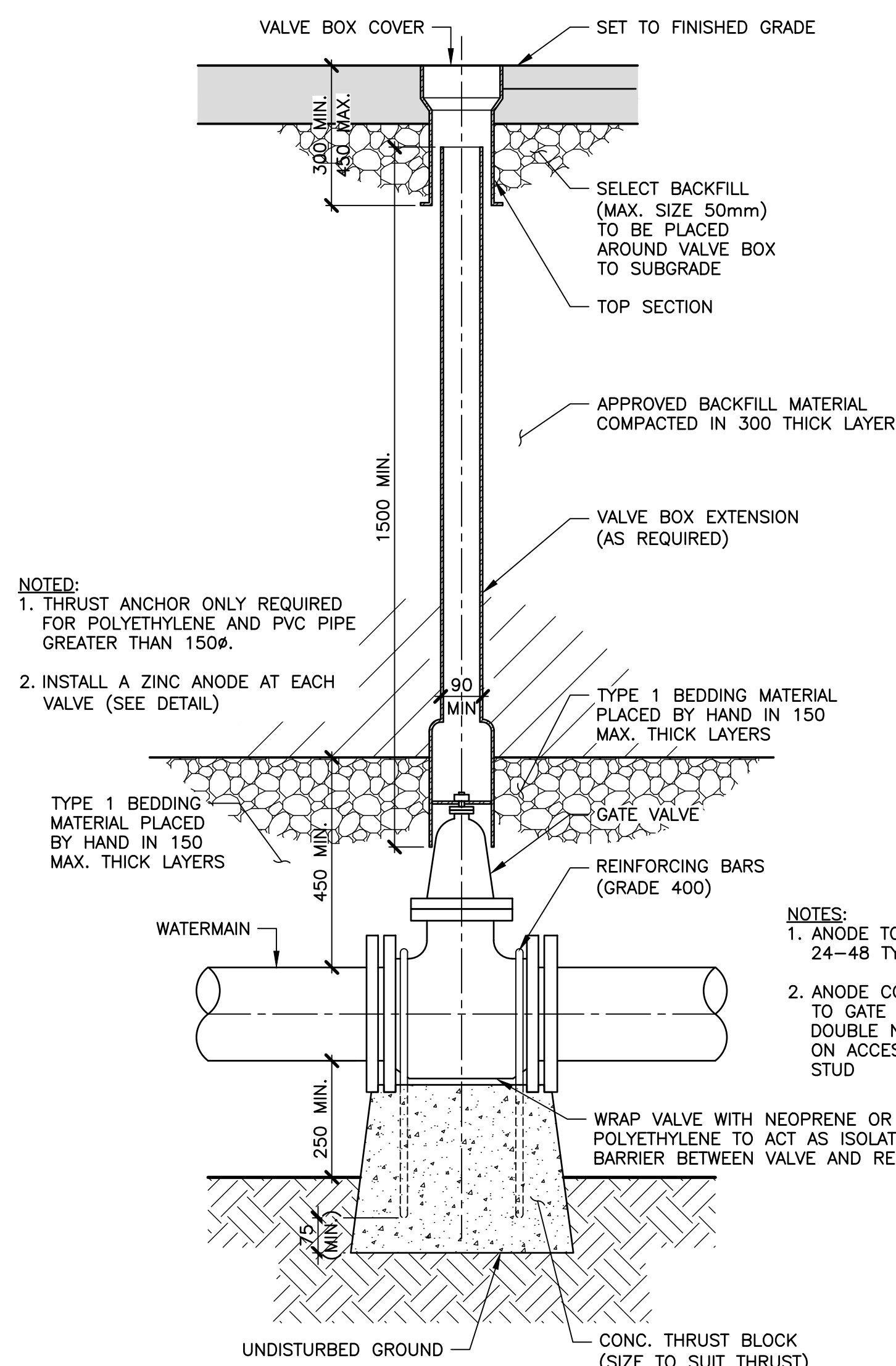
Designed	Drawn
RWM	CB

Checked	Approved
JAB	RWM

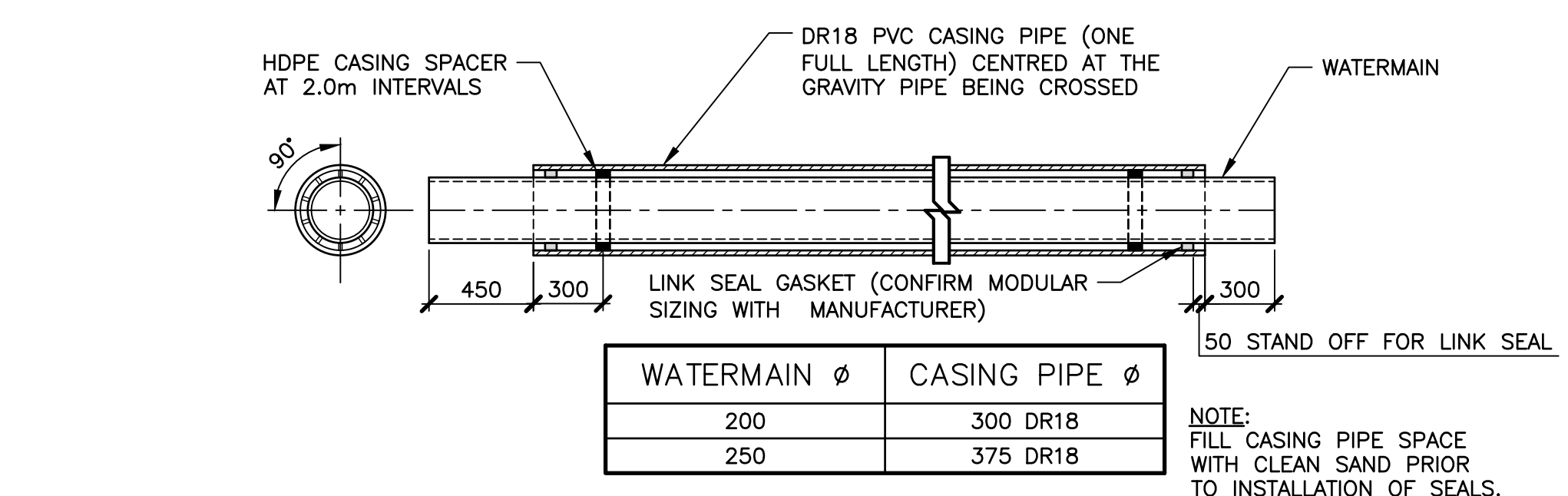
Sheet No
3 of 5

Drawing No
C03

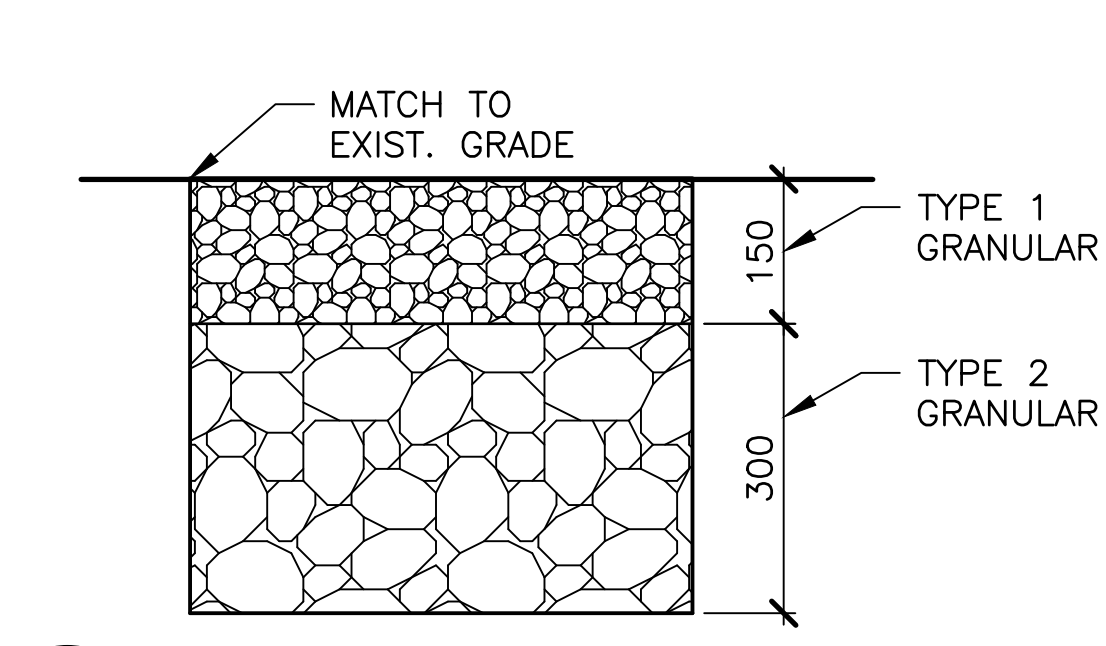




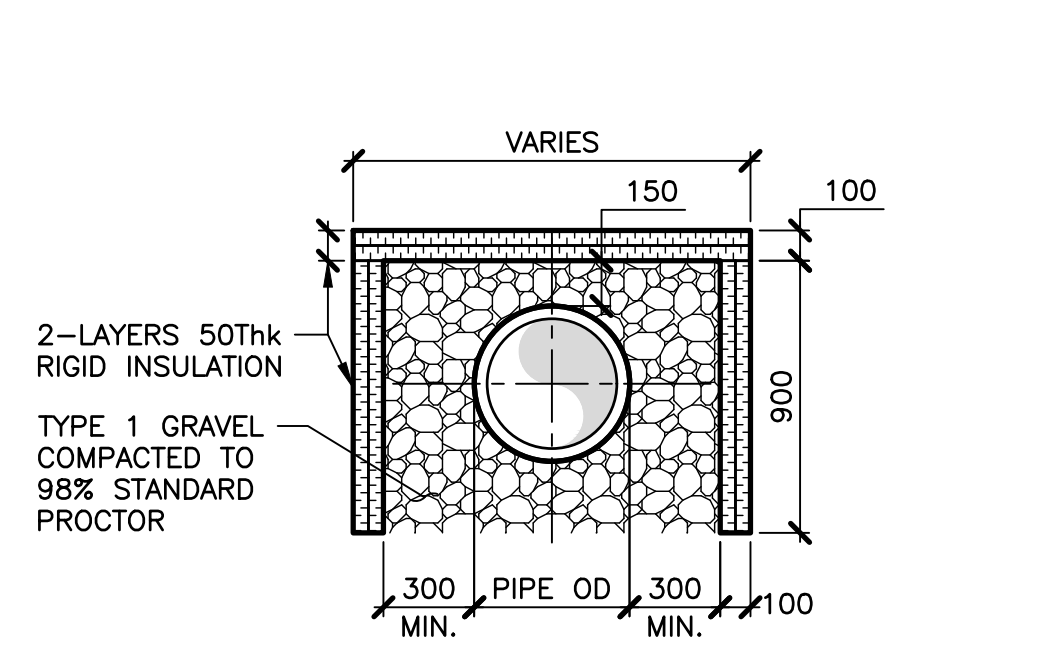
1 DETAIL-GATE VALVE AND BOX
1:10



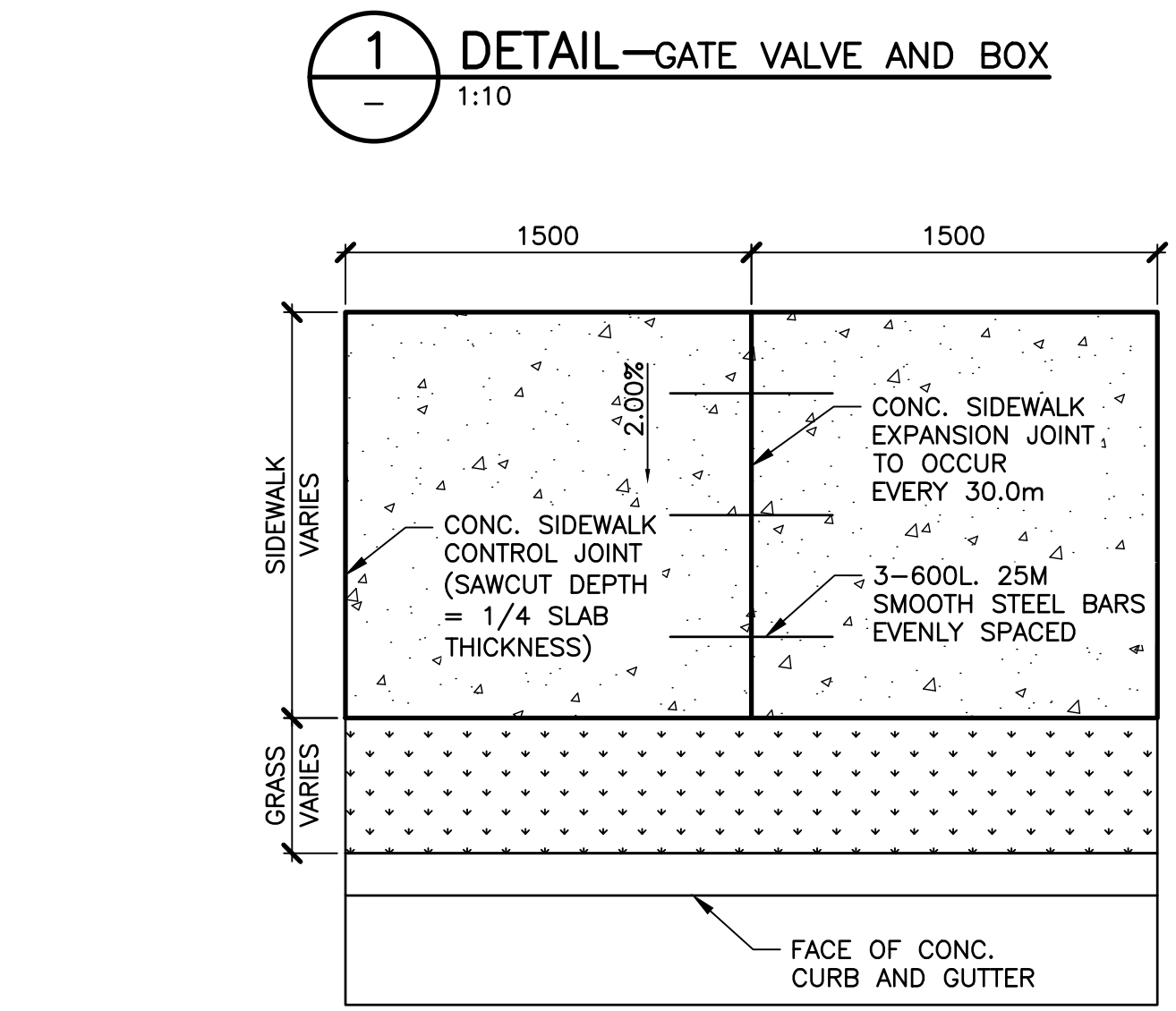
3 DETAIL-WATERMAIN SLEEVE (PROVISIONAL)
1:25



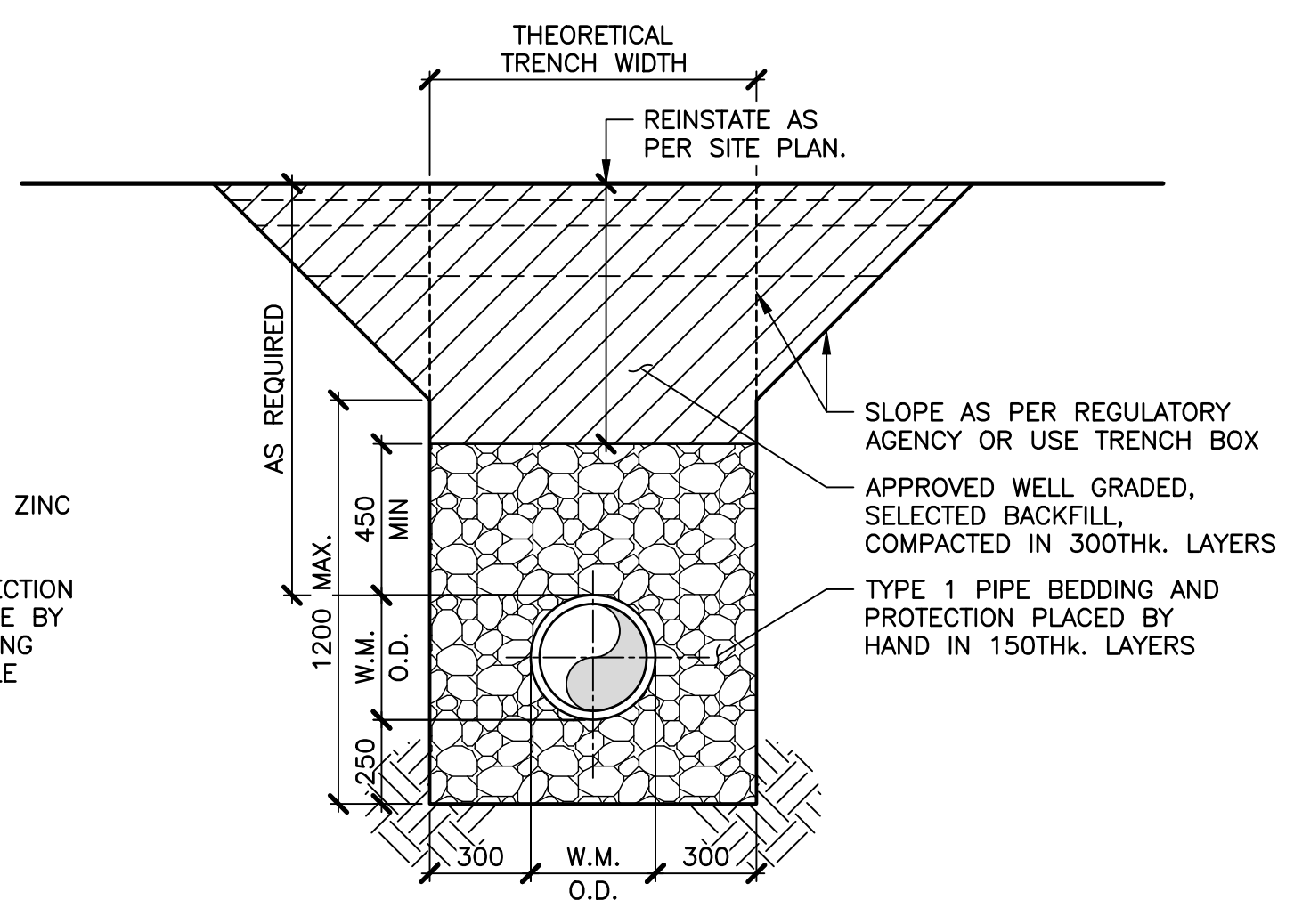
4 DETAIL-GRAVEL AREA REINSTATEMENT
1:10



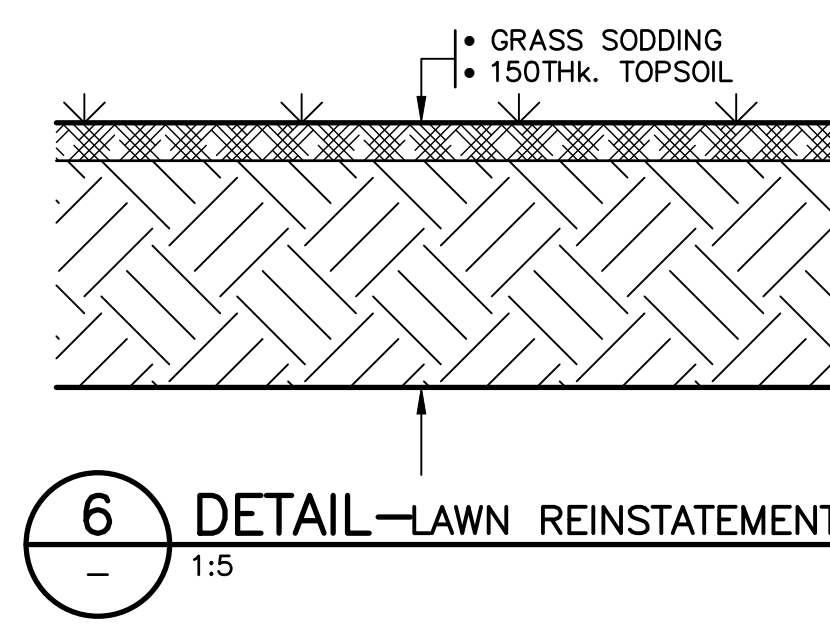
5 DETAIL-PIPE INSULATION (WHERE COVER LESS THAN 1.50m)
1:25



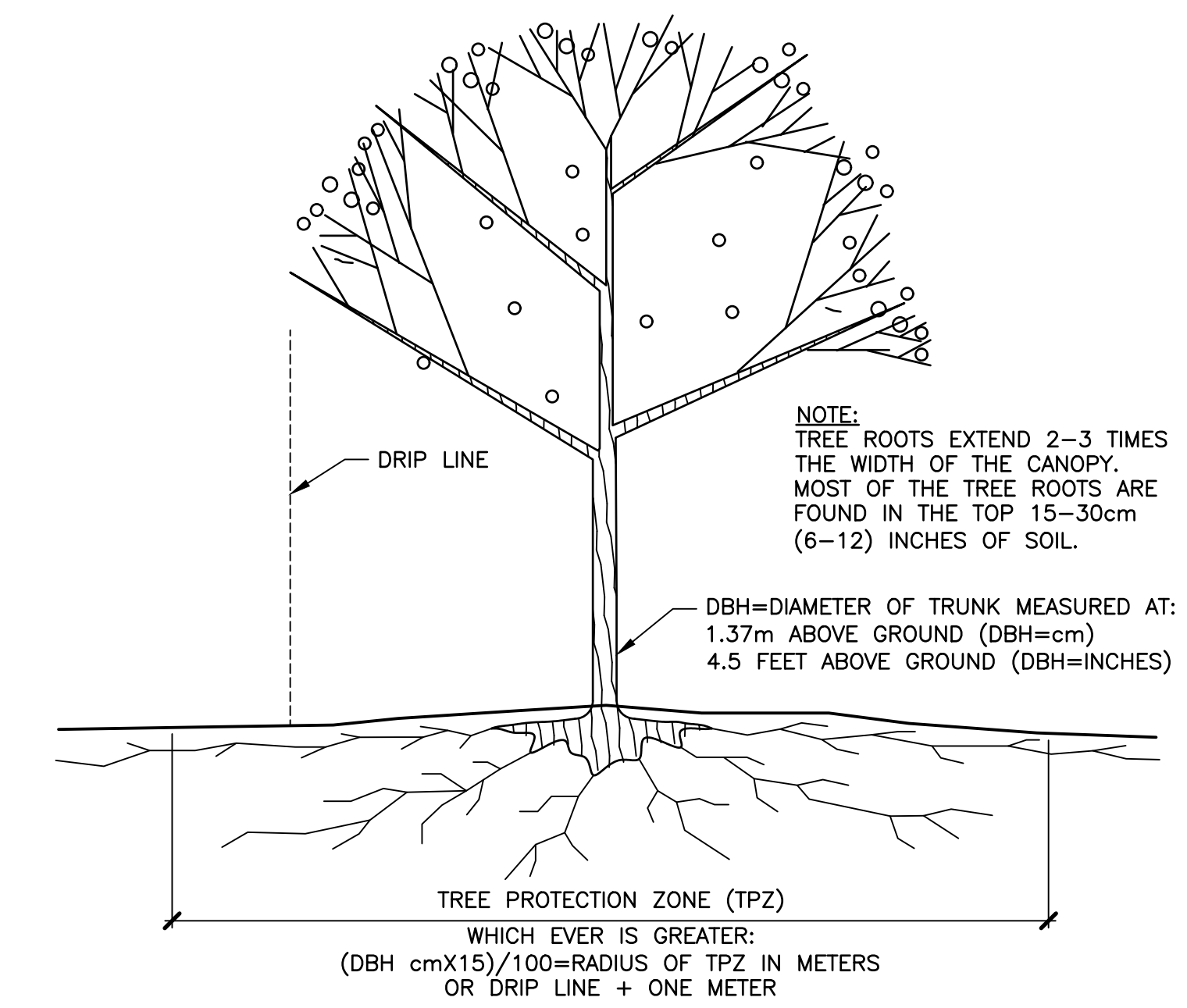
8 DETAIL-CONCRETE SIDEWALK REINSTATEMENT STA. 025+0+325
1:25



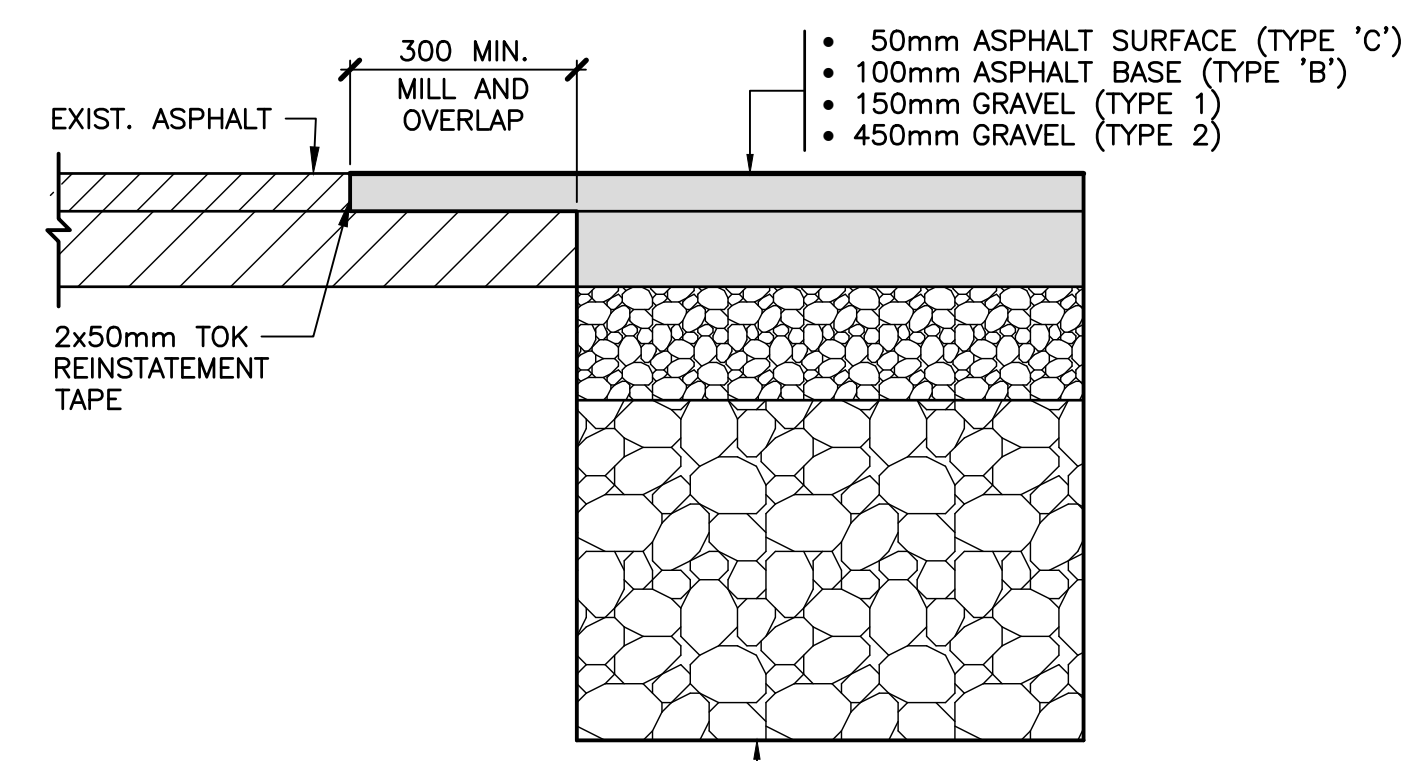
2 DETAIL-TYPICAL WATERMAIN TRENCH
1:20



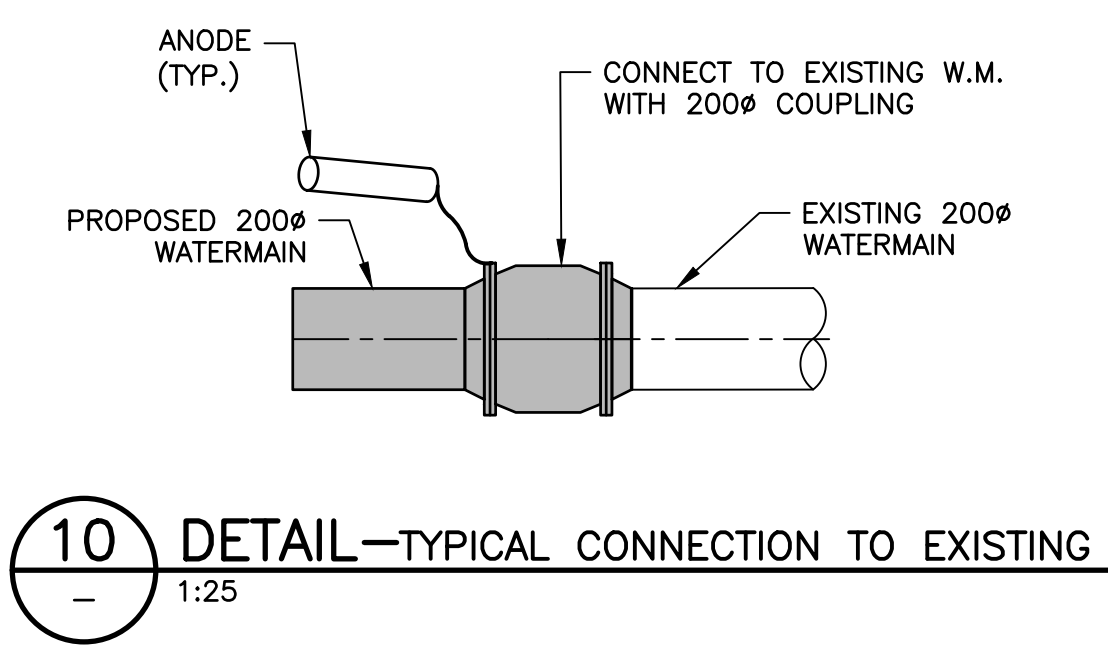
6 DETAIL-LAWN REINSTATEMENT
1:5



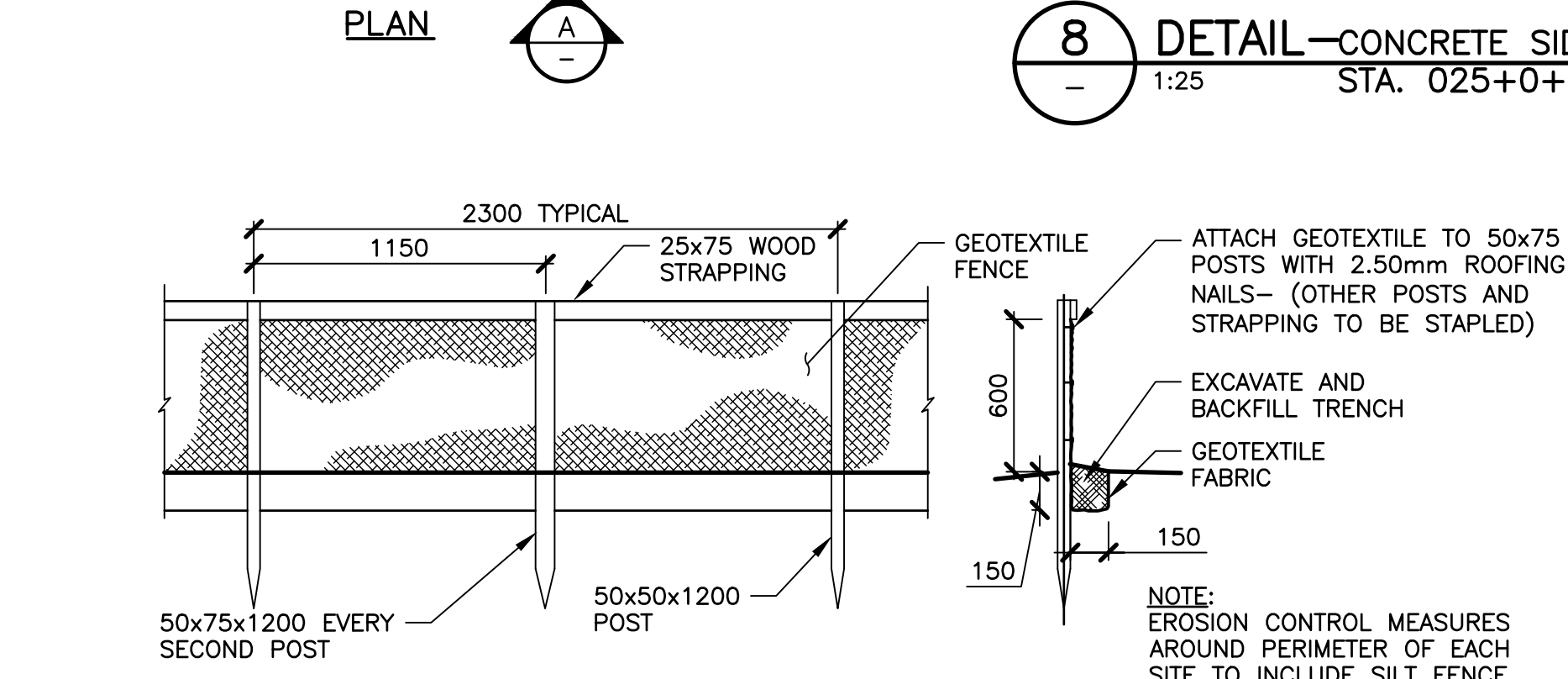
7 DETAIL-TREE PROTECTION ZONE (TPZ)
1:25



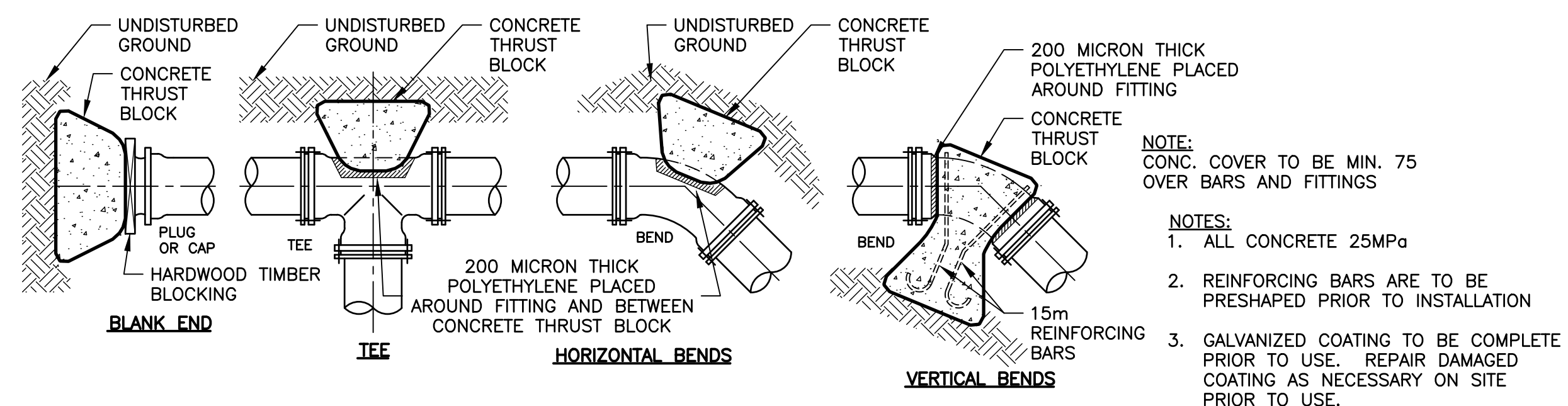
9 DETAIL-ASPHALT ROAD REINSTATEMENT
1:10



10 DETAIL-TYPICAL CONNECTION TO EXISTING
1:25



11 DETAIL-SEDIMENT CONTROL FENCE
1:25



MINIMUM CONTACT AREAS FOR CONC. THRUST BLOCKS

PIPE Ø	AREA m² FOR SOIL SUPPORTING CAPACITY OF 100 kPa	90° BEND	45° BEND	22.5° BEND	1.25' BEND
100	0.25	0.25	0.32	0.20	0.16
150	0.48	0.48	0.64	0.40	0.24
200	0.80	0.80	1.12	0.64	0.32
250	1.28	1.28	1.76	0.96	0.48
300	1.76	1.76	2.56	1.44	0.72

MINIMUM DISTANCE FROM FITTING TO UNDISTURBED GROUND

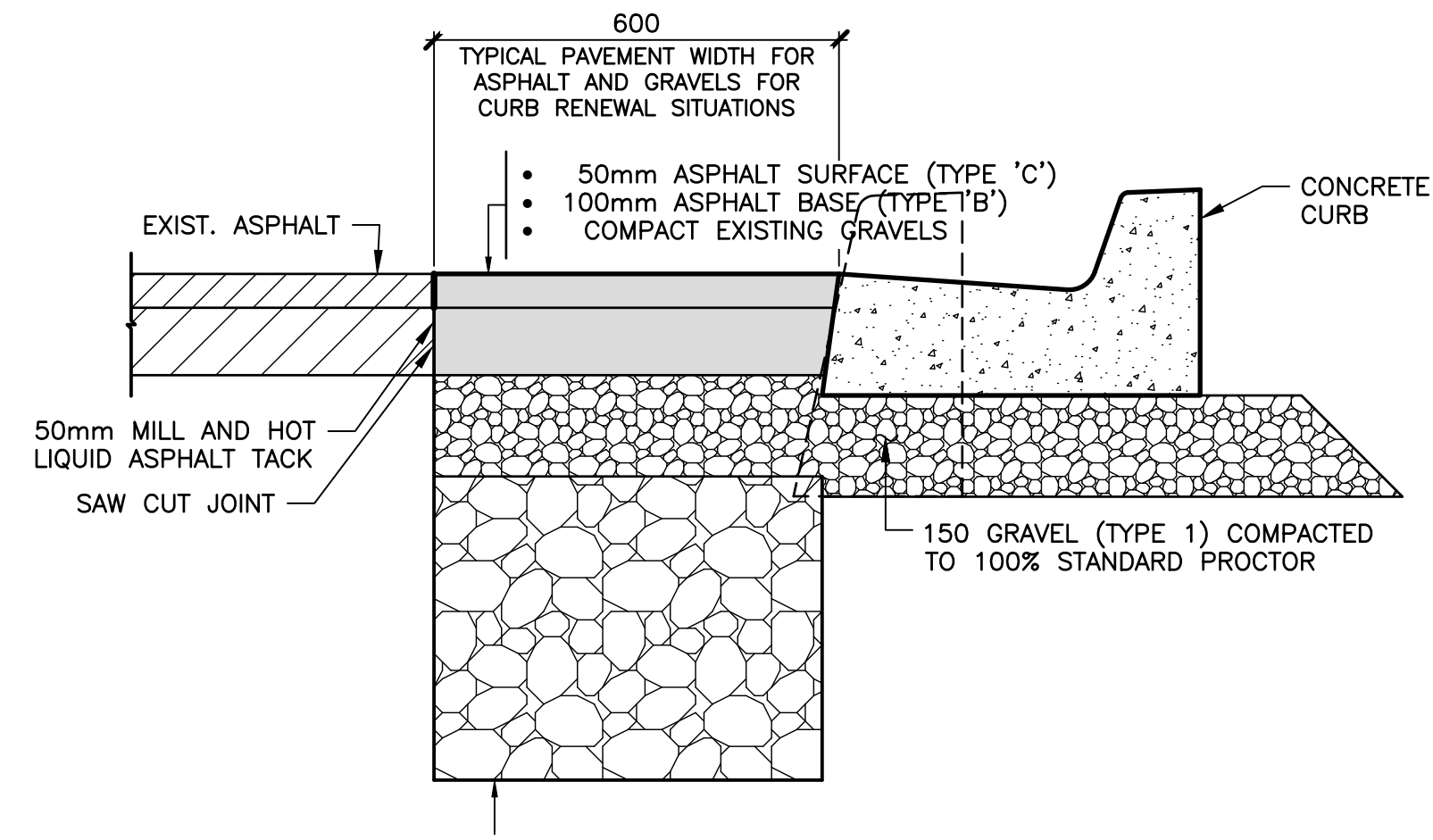
PIPE Ø mm	mm
100	450
150	450
200	450
250	600
300	750

VERTICAL THRUST BLOCKS THRUST COMPENSATED FOR BY MASS OF CONCRETE (m³)

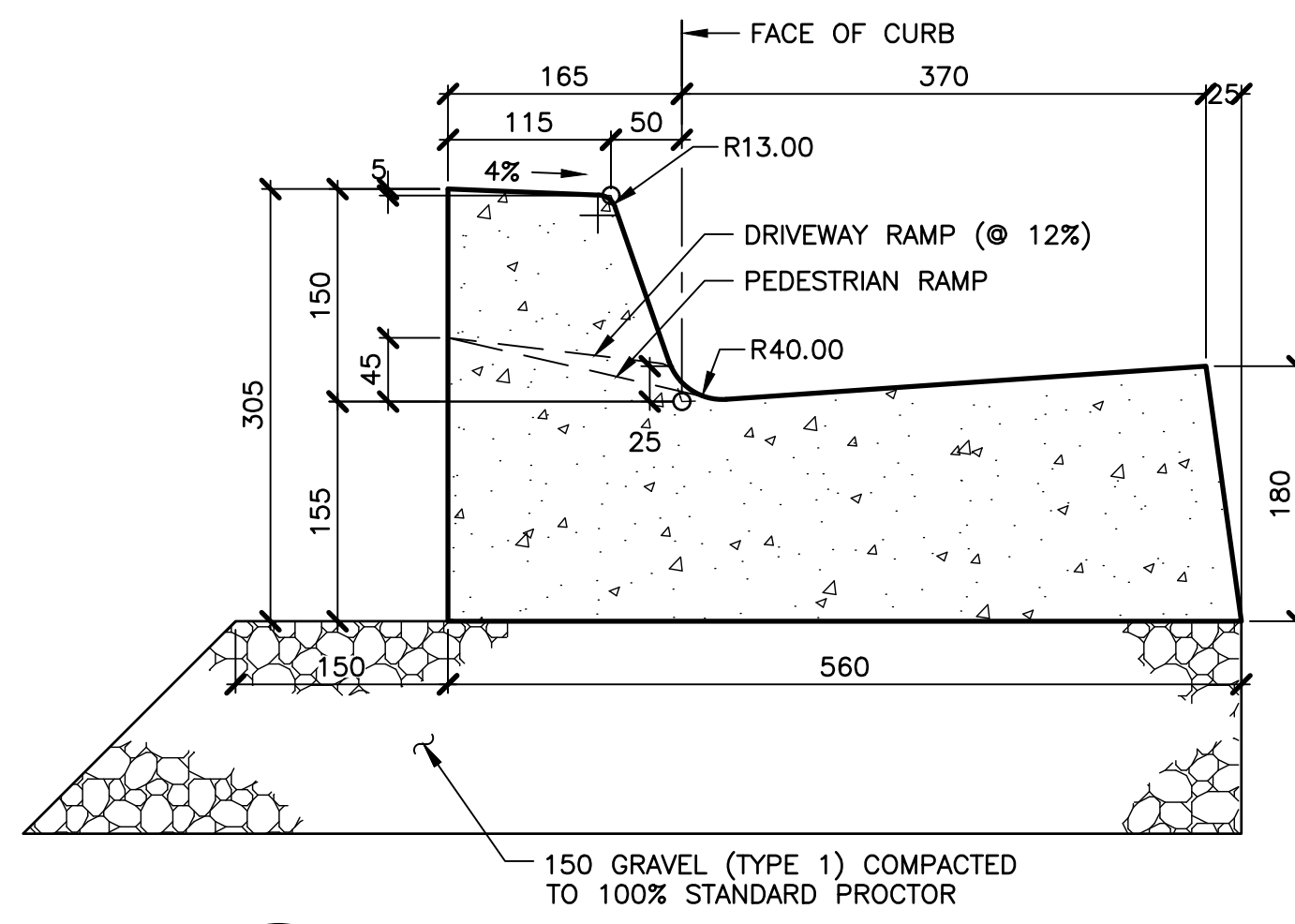
PIPE Ø mm	45° BEND	22.5° BEND	1.25' BEND
100	0.40	0.20	0.20
150	0.80	0.40	0.40
200	1.40	0.70	0.70
250	2.10	1.10	1.10
300	3.00	1.50	1.50

12 DETAIL-CONCRETE THRUST BLOCKS
N.T.S.

ISSUED FOR TENDER	APR 02/26	RWM
No.	Description	Date
Revision or Issue		
TOWN OF WOLFVILLE		
WOLFVILLE RAW WATER TRANSMISSION MAIN EXTENSION		
CIVIL		
DETAIL SHEET		
Contract No.	Date	Scale
251084.00	JAN 2025	AS NOTED
Designed	Drawn	Checked
RWM	CB	JAB
Approved	Sheet No.	Drawing No.
RWM	4 of 5	C04



1 DETAIL—CONCRETE CURB RENEWAL
C05 1:10



2 DETAIL—CONCRETE CURB AND GUTTER
C05 1:5

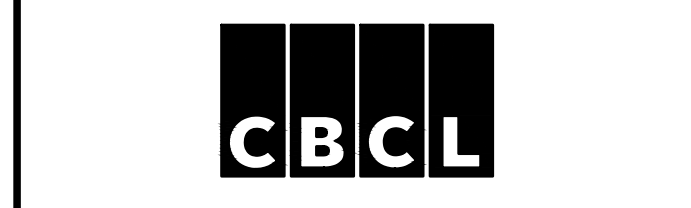
No.	Description	Date	By
0	ISSUED FOR TENDER	APR 02/26	RWM

Revision or Issue



TOWN OF WOLFVILLE
WOLFVILLE RAW WATER
TRANSMISSION MAIN EXTENSION

CIVIL
DETAIL SHEET



CBCL No 251084.00	Contract No	Date JAN 2025	Scale AS NOTED
Designed RWM	Drawn CB	Checked JAB	Approved RWM
Sheet No 5 of 5		Drawing No C05	

